

Operating Instructions

Hand Held Sprayer

CAUTIONS FOR SAFE AND EFFECTIVE USE

- Read Owner's Manual completely before operating this sprayer
- Always wear safety goggles, gloves, and protective clothing while using this sprayer
- Do not leave sprayer in sun when not in use
- Clean and rinse sprayer after each use
- Always release pressure when sprayer is not in use
- Read and follow all instructions and cautions of chemical manufacturer
- Never store sprayer material in sprayer
- Do not use mechanical devices to pressurize sprayer, this could cause excessive pressure which could cause the tank to explode
- Do not use solutions hotter than 105° F
- Do not use acid in this sprayer

WARNING!

Improper use or failure to follow instructions can result in explosive failure with major injuries. For safe use of this product you must read and follow all instructions before use.

OPERATING INSTRUCTIONS:

1. Inspect interior and exterior of tank for signs of deterioration (i.e. cracks, bubbling and/or pitting) of body and bottom. Any sign of deterioration indicates possible tank weakening and could result in explosive bursting under pressure. If any of these signs are found, DISCARD TANK IMMEDIATELY AND REPLACE.
2. Remove pump by turning counterclockwise allowing residual pressure to escape.
3. Prepare spray solution following directions on container label.
4. Fill tank with a maximum not to exceed fill capacity.
5. Re-insert pump into tank and tighten securely.
6. Pressurize sprayer with 20-25 strokes of the pump handle.
7. Point nozzle away from you & depress trigger lever to operate.
8. Adjust nozzle to desired spray pattern by turning nozzle cap from fine spray to pin stream.

CLEAN SPRAYER AFTER EACH USE:

1. Rinse tank thoroughly with clear water.
2. Empty tank.
3. Refill tank with clear water.
4. Check pump barrel to be sure no dirt is stuck to barrel.
5. Place pump into tank opening and rotate clockwise until tightly locked and sealed in tank opening.
6. Pump plunger up and down 8-10 strokes.
7. Open shut-off and allow water to run through to clean discharge assembly.
8. Remove pump
9. Empty sprayer
10. REPEAT STEPS 1-9 IF NECESSARY.

SPRAYER MAINTENANCE:

1. Periodically remove and clean nozzle assembly.
2. Pump should be periodically oiled by putting 1 or 2 drops of oil down pump rod through opening in cover.
3. If nozzle clogs:
 - A. Remove complete nozzle assembly
 - B. Disassemble nozzle
 - C. Clean openings of any obstructions
4. Never use any tool to remove pump if there is pressure in sprayer.

SPRAYER STORAGE:

1. Sprayer tank should be hung upside down with pump removed in a warm, dry location.
2. Do not store or leave any solution in tank after use.

CAUTION:

DO NOT ATTEMPT TO MODIFY OR REPAIR THIS PRODUCT EXCEPT WITH ORIGINAL MANUFACTURER'S PARTS.



135 Region South Drive, Jackson, GA 30233
678-688-5601 • www.bgequip.com

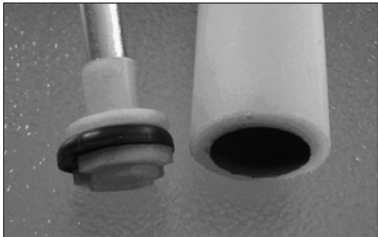
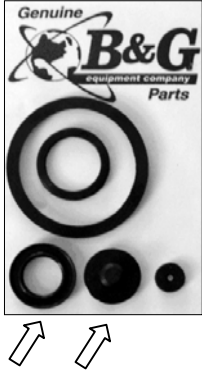
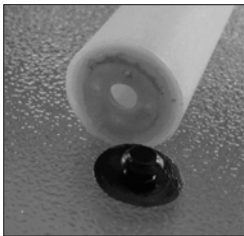



Sprayer Repair and Maintenance

The QT-1 Repair Kit has the gaskets necessary to keep the sprayer operating properly. Included are two gaskets for the top, small gasket for the tip extension, pump-tube gasket, and check valve for the pump tube.

Order Repair Kit: #24000037

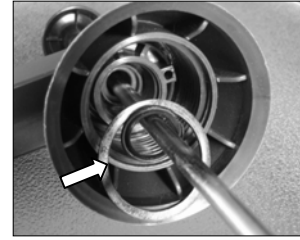


| SYMPTOMS | SOLUTIONS |
|--|---|
| <p>Pumping creates small amount of pressure in the bottle, not enough to spray</p> | <ul style="list-style-type: none"> • Clean check valve on pump tube • Inspect and clean pump-tube gasket <div style="display: flex; justify-content: space-around; align-items: center;">   </div> |
| <p>Pumping creates little pressure in the bottle, pump tube fills with water</p> | <ul style="list-style-type: none"> • Replace check valve and pump-tube gasket <div style="display: flex; justify-content: space-around; align-items: center;">   </div> |

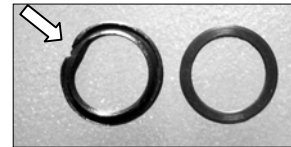
Pressure in bottle drops soon after pumping, air leaks from the top of the bottle

- Replace the large gasket in the top of the sprayer

Remove the siphon tube, use forceps to remove gasket

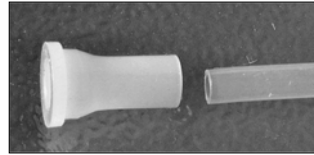


- Replace gasket at top of pump tube if damaged

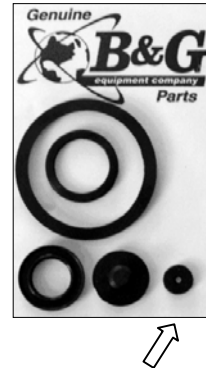


Spray is weak or sputtering

- Remove and clean the siphon-tube filter



- Replace the gasket in the tip extension



B&G Equipment Company,
135 Region South Drive, Jackson, GA 30233
800 544-8811 www.bgequip.com