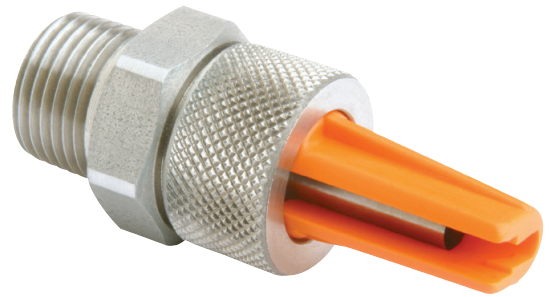


HYPRO® BOOM X TENDER®

Boomless Spray Nozzles

Features & Benefits

- Ideal for applications where a conventional boom cannot be used due to obstacles, such as power poles, guardrails, fences, trees, etc.
- Common uses include orchard, vineyard, forestry, pasture, turf and golf course spraying, as well as maintaining rights-of-way and fence rows
- Maintains a consistent spray distribution and adjustable spray swath over a pressure range of 30-60 PSI
- Excellent low drift option while extending spray reach
- Large droplet size reduces spray drift and promotes spray penetration
- FastCap models include nozzle, cap and gasket for fast change out and safer handling. The precision molded polyacetal nozzle and cap provide excellent life and low maintenance
- Standard models with precision molded polyacetal nozzle and threaded stainless steel body provide excellent durability and low maintenance
- Can be used with manual or automatic rate controllers



Hypro's ball swivel nozzle body is just one of the many options available for adjusting the swath width.



Boom X Tender nozzles are ideal for boomless spraying or as the last nozzle on a boom.



Hypro's Boom X Tender nozzles provide excellent coverage throughout the swath width for superior results.

HYPRO® BOOM X TENDER

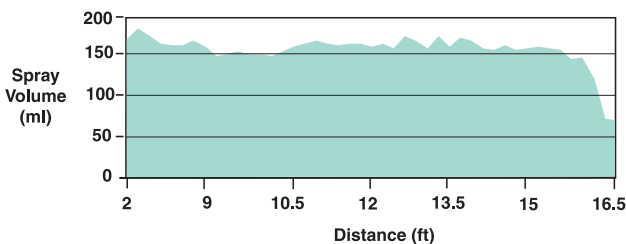
Specifications

BROADCAST and TURF Applications				Application Rate (GPA) at MPH								US Gal/1000 sq.ft. at MPH				Overall Swath (ft) @ 40PSI
Thread*	XT model	PSI	US GPM	4	5	6	7	8	10	12	14	2	3	4	5	
1/4" MNPT*	XT010 FC-XT010	30	0.9	8.9	7.1	5.9	4.5	3.6	3.0	2.4	1.8	0.41	0.27	0.20	0.16	13
		40	1.0	9.9	7.9	6.6	5.0	4.0	3.3	2.6	2.0	0.45	0.30	0.23	0.18	
		50	1.1	10.9	8.7	7.3	5.4	4.4	3.6	2.9	2.2	0.50	0.33	0.25	0.20	
		60	1.2	11.9	9.5	7.9	5.9	4.8	4.0	3.2	2.4	0.55	0.36	0.27	0.22	
1/4" MNPT*	XT020 FC-XT020	30	1.7	13.6	10.9	9.0	6.8	5.4	4.5	3.6	2.7	0.62	0.42	0.31	0.25	15
		40	2.0	16.0	12.8	10.6	8.0	6.4	5.3	4.3	3.2	0.73	0.49	0.37	0.29	
		50	2.2	17.6	14.1	11.7	8.8	7.0	5.9	4.7	3.5	0.81	0.54	0.40	0.32	
		60	2.4	19.2	15.3	12.8	9.6	7.7	6.4	5.1	3.8	0.88	0.59	0.44	0.35	
1/4" MNPT*	XT024 FC-XT024	30	2.1	16.2	13.0	10.8	8.1	6.5	5.4	4.3	3.2	0.75	0.50	0.37	0.30	16
		40	2.4	18.6	14.9	12.4	9.3	7.4	6.2	5.0	3.7	0.85	0.57	0.43	0.34	
		50	2.7	20.9	16.7	13.9	10.4	8.4	7.0	5.6	4.2	0.96	0.64	0.48	0.38	
		60	2.9	22.4	17.9	15.0	11.2	9.0	7.5	6.0	4.5	1.03	0.69	0.51	0.41	
3/8" MNPT*	XT043 FC-XT043	30	3.7	31.6	25.3	21.1	15.8	12.6	10.5	8.4	6.3	1.45	0.97	0.72	0.58	14
		40	4.3	36.7	29.4	24.5	18.3	14.7	12.2	9.8	7.3	1.68	1.12	0.84	0.67	
		50	4.8	41.0	32.8	27.3	20.5	16.4	13.7	10.9	8.2	1.88	1.25	0.94	0.75	
		60	5.3	45.2	36.2	30.2	22.6	18.1	15.1	12.1	9.0	2.08	1.38	1.04	0.83	
1/2" MNPT	XT080	30	6.9	68.3	54.6	45.5	34.2	27.3	22.8	18.2	13.7	3.14	2.09	1.57	1.25	13
		40	8.0	79.2	63.4	52.8	39.6	31.7	26.4	21.1	15.8	3.64	2.42	1.82	1.45	
		50	8.9	88.1	70.5	58.7	44.1	35.2	29.4	23.5	17.6	4.04	2.70	2.02	1.62	
		60	9.8	97.0	77.6	64.7	48.5	38.8	32.3	25.9	19.4	4.45	2.97	2.23	1.78	
3/4" MNPT	XT167	30	14.5	128	103	85.4	64.1	51.3	42.7	34.2	25.6	5.88	3.92	2.94	2.35	15
		40	16.7	148	118	98.4	73.8	59.0	49.2	39.4	29.5	6.78	4.52	3.39	2.71	
		50	18.7	165	132	110	82.6	66.1	55.1	44.1	33.1	7.59	5.06	3.79	3.03	
		60	20.5	181	145	121	90.6	72.5	60.4	48.3	36.2	8.32	5.54	4.16	3.33	
3/4" MNPT	XT215	30	18.6	144	115	95.9	71.9	57.5	48.0	38.4	28.8	6.60	4.40	3.30	2.64	16
		40	21.5	166	133	111	83.1	66.5	55.4	44.3	33.3	7.63	5.09	3.82	3.05	
		50	24.0	186	149	124	92.8	74.3	61.9	49.5	37.1	8.52	5.68	4.26	3.41	
		60	26.3	203	163	136	102	81.4	67.8	54.2	40.7	9.34	6.22	4.67	3.73	

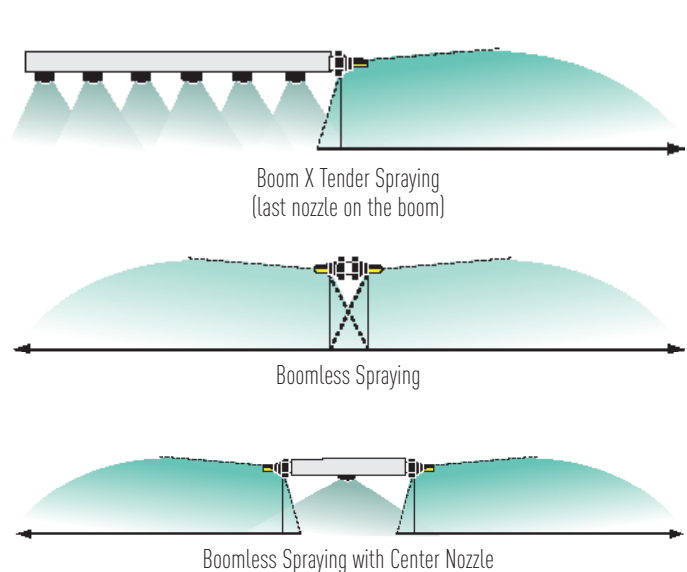
Features		
Common Use	Weeds	
Pattern	Boomless Fan	
Technology	Pre-Orifice	
Material	Stainless or Polyacetal	
Spray Angle	105°	
Pressure Range	30-60 PSI	
Configuration	MNPT & FastCap	
Part Numbers		
FastCaps	MNPT	Parts Kits for MNPT version
FC-XT010	XT010	XT010-GIOKIT
FC-XT020	XT020	XT020-GIOKIT
FC-XT024	XT024	XT024-GIOKIT
FC-XT043	XT043	XT043-GIOKIT
-	XT080	XT080-GIOKIT
-	XT167	XT167-GIOKIT
-	XT215	XT215-GIOKIT
Replacement FastCap Seal		
22W11MF64		
Model	Description	
9950-0033	Boom X Tender Tee/ Swivel Kit for use with 1/4" NPT or Fastcap XT Nozzles	

Note: Application rates are based on overall swath widths listed at 48" height. Refer to operating instructions if using a different swath. * Thread sizes applicable to standard models with threaded stainless steel body only.

Typical Spray Pattern Produced by XT Series

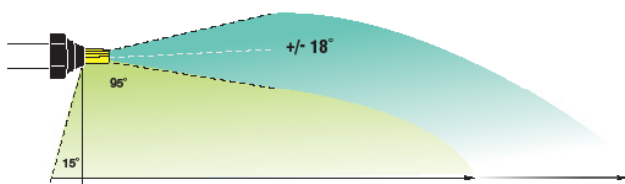


Common Uses of the Boom X Tender Spray Nozzles



Adjustable Swath Width

Swath width can be increased or decreased by adjusting the angle of the tip +/- 18°.



375 5TH AVE NW, NEW BRIGHTON, MN 55112 WWW.HYPROPUMPS.COM
PH: 800-424-9776 ORDERS FAX: 800-323-6496



Because we are continuously improving our products and services, Pentair reserves the right to change specifications without prior notice.