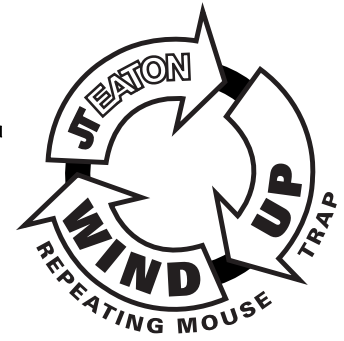
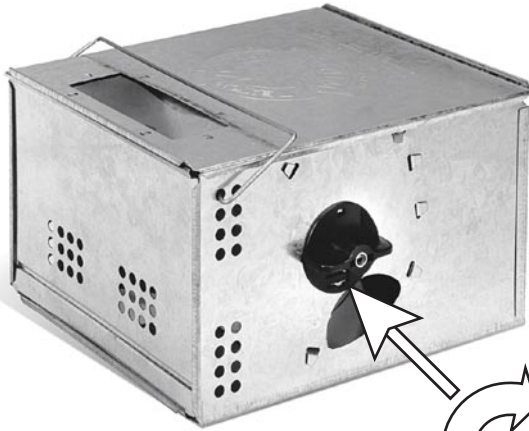


HOW TO USE THE JT EATON™

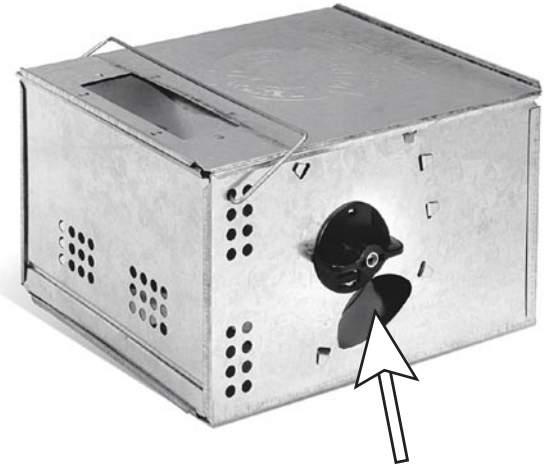


1. WINDING

No bait is needed with the JT EATON™ WIND-UP™ Multiple Catch Mouse Trap. Simply turn the winding handle clockwise 6 to 8 times (complete 360 degree turns) to catch many mice with one setting. Trap is now properly set.



Wind clockwise.

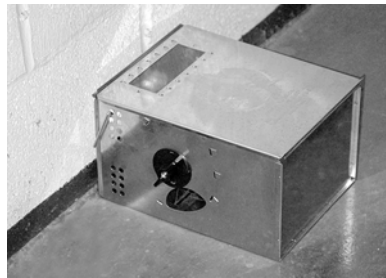


Mice will find the entrances on each side of the trap with their whiskers. They will enter looking for harborage or safety and trip the trigger.

2. PLACEMENT



PARALLEL

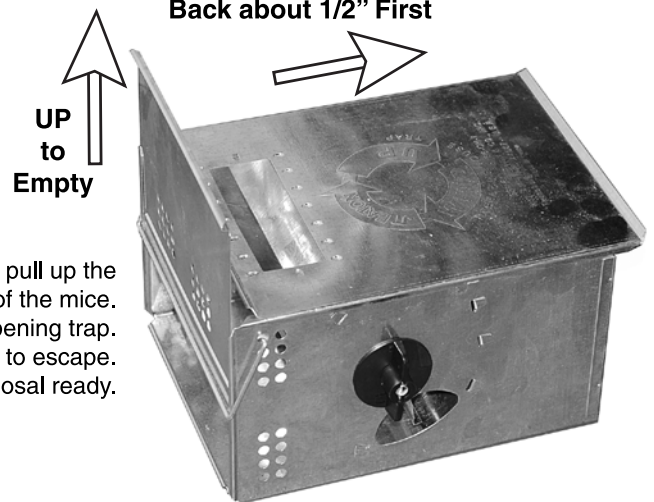


PERPENDICULAR

Place the JT EATON™ WIND-UP™ Multiple Catch Mouse Trap 1 1/2" to 2" parallel to the wall or perpendicular to the wall in an area where mice are known to travel.

3. EMPTYING

Slide the top lid back pull up the end plate and dispose of the mice. Use CAUTION when opening trap. Do not allow live mice to escape. Have a container for disposal ready.



MANUFACTURERS OF QUALITY PEST CONTROL PRODUCTS

JT EATON™

SINCE 1932

1.800.321.3421
www.jteaton.com